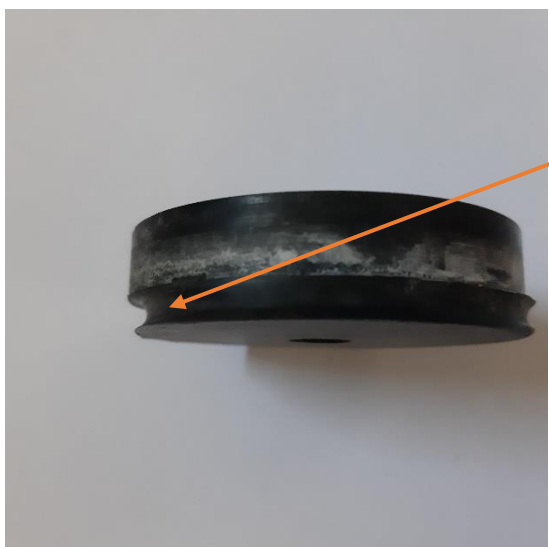


2000 Class technical advisory note

Is your spinnaker hard to drop?



The issue may be caused by wear to the spacer that is located between the black jib tack bar and the hull.



Over time, the downhaul rope cuts into the spacer and creates a groove that then traps the rope causing excess friction.

This issue may well cause damage to the spinnaker if it gets trapped in the groove.

Unfortunately RS do not have the spacer as a spare part, but the class now have an approved a spacer that is available through GSD Sailing Services (Rob Burrige), and complies with Class Measurement Rules (appendix 2, items 4 and 5).



The spacers can be supplied at £15 a pair, or supplied and fitted for £30 at events.

Contact Rob at gsdservices21@hotmail.com or at a 2000 event.